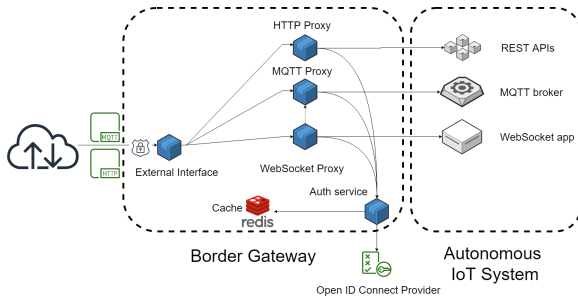


# LinkSmart® Border Gateway

The LinkSmart® Border Gateway provides a single point of entry into an Internet of Things autonomous system (IoT AS) consisting of connected devices, their supporting services and the messaging infrastructure. These are the main functionalities:

- TLS offloading at the edge of the protected autonomous system for the following protocols:
  - HTTPS
  - TLS-encrypted MQTT
  - TLS-encrypted WebSocket
- Authentication and authorization for HTTP, MQTT and WebSocket requests. Users and their permissions can be defined using an Identity Provider conforming to the OpenID Connect protocol.
  - Access control for HTTP requests can be defined for the type of protocol (HTTP or HTTPS), requested resources (or paths) and allowed HTTP methods.
  - Access control for MQTT requests can be defined for topics, wildcards, and MQTT commands (publish, subscribe etc.).
  - Access control for WebSocket connections can be defined for hostname, port and request paths.
- HTTP request forwarding to internal services according to location definitions (e.g. a request to `https://iot.linksmart.eu/<location>` can be forwarded to localhost or any other host protected by the Border Gateway on the correct port).
- Address translation for HTTP requests, i.e. internal IoT-AS addresses in HTTP responses can be translated to external addresses that the requester is able to connect to.



## Getting Started

- [Tutorial](#)
- [Deployment](#)
- [Authentication and Authorization](#)
- [Address translation](#)
- [BGW Auth Service Open API documentation](#)

Release Status	
Build Status	
Source Code	<a href="https://github.com/linksmart/border-gateway">https://github.com/linksmart/border-gateway</a>
Programming Language(s)	Javascript
License	<a href="#">Apache v2.0</a>